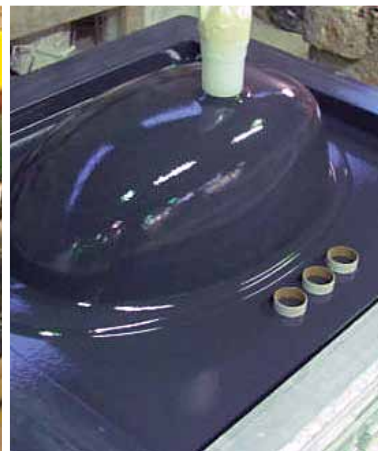
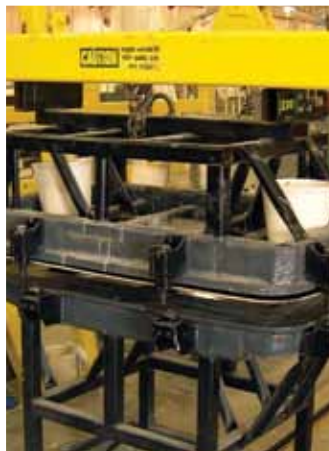


# Solutions for Composites: External Mold Releases

- *Polymeric Mold Releases*
- *Semi-Permanent Mold Releases*
- *Paste Wax*
- *Mold Sealers*
- *Cleaners & Strippers*
- *Uses Include:*
  - *Open Molding*
  - *Marble & Solid Surface*
  - *RTM*
  - *Compression Molding*
  - *Infusion*
  - *Filament Winding*
  - *SMC/BMC*



	Product No.	Application Method	Application Temperature	Open Molding / Lay-up / Spray-Up / Bagging	RTM / Wet Compression	Marble Solid Surface / Casting Polymer Concrete	Filament / Mandrel Wrap	SMC / BMC	W = water-based S = solvent-based	
<b>XTEND® Semi-Permanent Mold Releases</b>	<i>Gel-coated / High Gloss Class "A" Finish Parts</i>									
	818	Wipe-on; Let Dry	Ambient	■	△	■			S	
	824 (low slip)	Wipe-on; Let Dry	Ambient	■	△				S	
	832	Wipe-on / Wipe-off	Ambient	■	■	■			S	
	858	Spray or Wipe	Ambient or higher	■	△	△			S	
	1050	Wipe-on; Let Dry	Ambient	■		△			S	
	1080	Wipe-on; Let Dry	Ambient	■	△	■			S	
	1110	Wipe-on / Wipe-off	Ambient	■	■	■			S	
	W-102	Wipe-on / Wipe-off	Ambient	■	△				W	
	<i>Non gel-coated / Primer gel-coat / Painted Parts</i>									
	19ZAM	Wipe-on; Let Dry	Ambient	■	■	■				S
	19RSS	Wipe or Spray	Ambient to 350°F / 65°C	△	■	■				S
	W-7838D (matte finish)	Wipe-on	Ambient	■	■					W
	<i>Mold Sealers</i>									
XTR	Wipe-on / Wipe-off	Ambient	■	■	■	■	■	■	S	
WS-50 (matte finish)	Wipe-on; Let Dry	Ambient	■	■	■	■	■	■	W	
<b>MoldWiz® Polymeric Mold Releases</b>	<i>Gel-coated / High Gloss Class "A" Finish Parts</i>									
	F-57 Series	Wipe-on & Wet Polish	Ambient	■		■			S	
	250-SL/55NC	Wipe-on & Wet Polish	Ambient	■		■			S	
	F-23/ANC	Wipe-on & Wet Polish	Ambient	△	■		■		S	
	<i>Non gel-coated / Primer gel-coat / Painted Parts</i>									
	WB-2700	Wipe or Spray	Ambient to 450°F / 235°C	■	■	■	■	■	■	W
	EM-Series	Wipe or Spray	Ambient to 300°F / 150°C		■			△	■	W
	985JB (concentrate)	Wipe or Spray	Ambient to 400°F / 205°C						■	W
JB5 (ready to use)	Wipe or Spray	Ambient to 400°F / 205°C						■	W	
<i>Mold Conditioner</i>										
Melax® 3F/NC	Wipe-on & Wet Polish	Ambient	■	△	△	△	△	△	S	
<b>PasteWiz®</b>	<i>Paste Wax</i>									
	PasteWiz	Wipe-on & Polish	Ambient	■					S	
	PasteWizHC	Wipe-on & Polish	Ambient Hot Climates	■					S	
<b>CleanWiz®</b>	<i>Mold Cleaners and Strippers</i>									
	CW-10/NC	Wipe-on / Wipe-off; Water Wash	Ambient	Mold stripper. Excellent for removing paste wax.					S	
	CX-500	Wipe-on / Wipe-off	Ambient	General purpose cleaner					S	
	CX-525	Wipe-on / Wipe-off	Warm to 200°F / 95°C	Cleaner/Stripper. Excellent for closed molding & warm molds.					S	
	WCX	Wipe-on / Wash-off	Ambient	100% water-base stripper. Removes semi-permanent release, silicone and other contaminants.					W	

These products reflect only a small portion of what we have to offer. Please contact us for more information. This information is supplied for technically skilled professionals working at their own risk. AXEL believes the information to be accurate, although the Company assumes no liability in the validity of the information for any specific process or application. Moreover, AXEL will assume no liability from any direct and/or consequential damages of any kind that may occur from the use or non-use of AXEL products or information supplied by the Company or its appointed representatives. ISO 9001 Registered. REACH Compliant. MoldWiz®, XTEND®, PasteWiz® and CleanWiz® are registered trademarks of Axel Plastics Research Laboratories Inc. ©2013 Axel Plastics Research Laboratories, Inc. All rights reserved.

For technical data sheets or free samples contact:

Axel Plastics Research Laboratories, Inc.  
 Box 77 0855  
 5820 Broadway, Woodside, New York 11377 USA  
 1-800-332-AXEL(2935) in USA & Canada  
 1-718-672-8300  
 Fax: 1-718-565-7447  
 www.axelplastics.com  
 info@axelplastics.com

